

ColoQuick Thaw



Thaw
 2 cartridges
 Dimensions (LxWxH): 27"x 20.5"x 29"
 Electrical connection USA/CAN:
 240V single phase/30 Amp
 Water bath size: 22 gallons

ColoQuick Pasteur Basic 2



Pasteurizer and Thaw
 2 cartridges
 Dimensions (LxWxH): 27"x 20.5"x 29"
 Electrical connection USA/CAN:
 240V single phase/30 Amp
 Water bath size: 22 gallons

ColoQuick Pasteur MAXX 4



Pasteurizer and Thaw
 4 cartridges
 Dimensions (LxWxH): 30"x 27.5"x 34"
 Electrical connection USA/CAN:
 240V single phase/60 Amp
 208V 3 phase/30 Amp
 240V 3 phase/40 Amp
 Water bath size: 40 gallons

ColoQuick Pasteur MAXX 8



Pasteurizer and Thaw
 8 cartridges
 Dimensions (LxWxH): 45.5"x 30"x 34"
 Electrical connection USA/CAN:
 240V single phase/60 Amp
 208V 3 phase/30 Amp
 240V 3 phase/40 Amp
 Water bath size: 70 gallons

complete system

- 1 ColoQuick unit
- 1 freezer
- 1 filling station
- 10 cartridges
- 35 colostrum bags
- 1 colostrometer
- 1 nipple assembly
- 1 drencher
- 2 straps
- hoses, fittings, etc...

cartridge & bag



Cartridge & Bag

Sterile 4-liter bag is kept inside a unique green cartridge, which enables easy freezing, thawing, and storage of colostrum.

Colostrum Bank

Chill colostrum quicker every time. Digital thermostat allows you to adjust temperature on a scale from -35°F to 40°F.

Frozen Storage



Testing and Filling

Filling Station

This sturdy stainless steel filling station is part of every system. It can be mounted on a wall or stand alone on the floor. Easy to clean. Holds up to 4 liters (1 gallon).



Digital Refractometer

Quick and easy way to measure the exact quality of your colostrum.



Easy Feeding

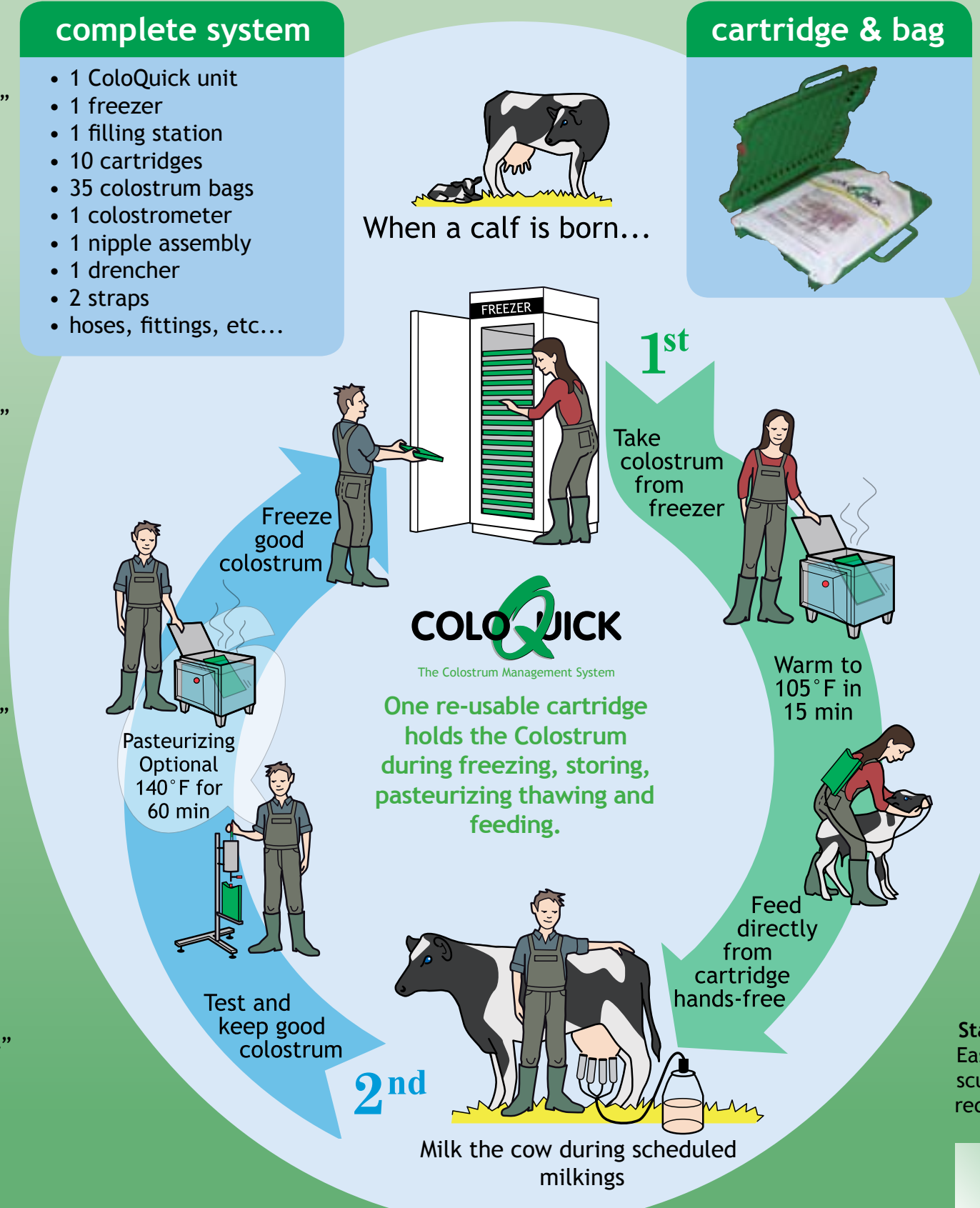
Backpack

Comfortable backpack holds the cartridge during feeding. Made with Thinsulate™ material, it is designed to keep colostrum at the perfect temperature year round.



Stainless Steel Tube Feeder

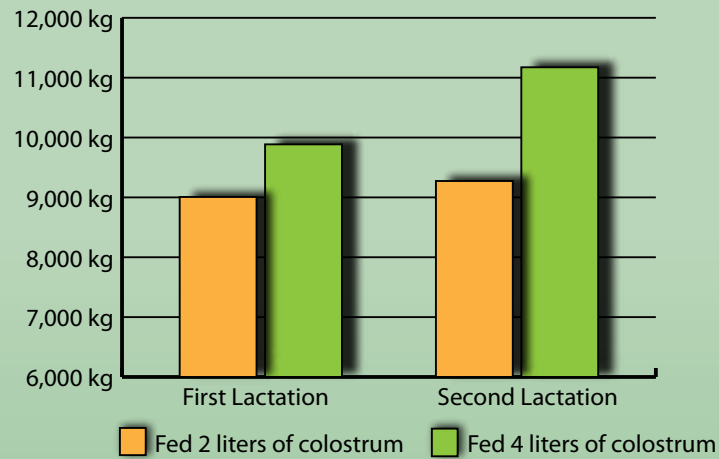
Easy to clean and sanitize. Eliminates scuffing to protect calf's throat and reduce bacteria.





PROVEN BY RESEARCH, PROVEN BY FARMERS

Higher Milk Production



Source: Journal Dairy Science 91, 704-712, 2008

Calves that consume 4 liters of colostrum immediately after birth will produce 2,100 lbs (950 kg) more milk in first lactation compared to calves that consume only 2 liters. In second lactation the difference increases to 3,650 lbs or 1,650 kg more. Source: Faber S.N. et al, University of Arizona



ColoQuick Performance Log

The ColoQuick units are equipped with a USB port that allows you to download data logs of cycles. You can verify that your colostrum was properly pasteurized or thawed, and easily monitor both equipment and staff.

Connect on Facebook

For regular tips on calf care visit our Facebook page



“With ColoQuick, calves gained 13 lbs more in 8 weeks”

“Colostrum has always been important to us, so we had developed a very sophisticated protocol for feeding calves as quickly as possible after birth. When we learned about the ColoQuick we ran a test of its effectiveness. We put calves into two groups, first one was fed colostrum with the ColoQuick system and the other using our protocol. We weighed the calves at birth and at 8 weeks old (1 week after weaning). The calves in the ColoQuick group gained on average 13 lbs more than those fed the other way.”

- Ionel S., Fulton, MI 3,600 cows



“The ColoQuick pays for itself within one year.”

“We get about 90 new calves a month on our dairy. Within a few weeks after implementing the system, I noticed reduced incidences of first-week scours in my newborn calves. The calves are doing so well, the ColoQuick pays for itself within a year.”

I really like the fact that the individual bags are filled prior to pasteurization, that leads to less chance of recontamination.”

- Deric L., Durand, WI 850 cows



colostrum management system



The Colostrum Management System

start ‘em right

- consistent results
- simple to use
- fast payback



top product of the year 2012



2011



2010



2009

715.658.1792

www.GoldenCalfCompany.com