

Installation of Heater

ColoQuick

Thaw, Pasteur Basic2,
MAXX4, MAXX8

For questions please contact us at
support@goldencalfcompany.com

Or 715-318-0897

7/1/14



Step 1: Tools Needed

Items: 7mm Socket and Channel Locks. Tools for this job may vary but this should get you by.



Step 2: Check configuration and remove thermal fuse probe

Note bridge configuration to make sure the new one is attached the same as the old



Step 3: Remove wires

Remove the old wires and be sure to note where they came from.



Step 4: Remove nut

Items: Use the channel locks and remove the nut.



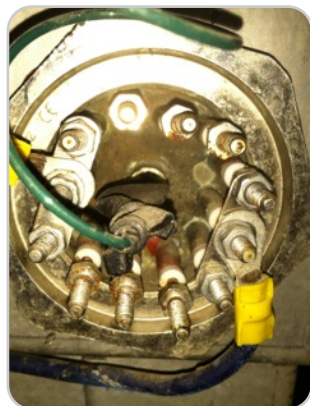
Step 5: Remove the old heater

You may have to knock some of the build up off to be able to pull out the old heater.



Step 6: Install new heater

Re-using the old nut, install the new heater making sure the gasket is between the heater and the outside of the tank.



Step 7: Re-attach wiring

Re-wire the new heater the same as the old heater. Also, make sure to put the Thermal Fuse probe back in place.



Step 8: Check thermo-fuse.

Now would be a good time to check your thermo-fuse to make sure that it hasn't tripped.

Notes:

Make sure to save the nut holding the heater in the unit as you will be re-using it. Due to some slight differences between configurations of units, you may have to remove additional parts to access the heater. **Also, it is important to make sure the unit is unplugged when ever replacing any electrical component.**