

# Installation of drive belt

ColoQuick

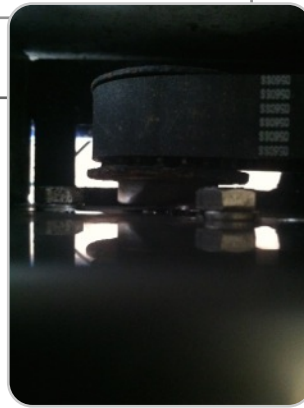
MAXX4, MAXX8

For questions please contact us at [support@goldencalfcompany.com](mailto:support@goldencalfcompany.com) or at 715-318-0897

5/28/14



**Step 1: Tools Needed**  
Items: 10mm wrench,  
2.5mm allen wrench



**Step 2: Loosen motor bolts**  
Loosen the three motor bolts on the inside of the motor mount.



**Step 3: Remove sensor**  
Remove the motor sensor and sensor arm.



**Step 4: Remove motor mount**  
Remove the four bolts holding the motor mount on.



**Step 5: Replace the belt**  
Replace the belt and re-install the motor mount.

## Step 6: tension the belt

Re-tension the belt and tighten the three motor bolts. Re-install the motor sensor and check the position of the cartridge holder. Aline the sensor with the cartridge holder.